

Touchpoint Tuesday

January 20, 2026



What We'll Cover

- ❖ Fiscal Updates
- ❖ Early College Table Talk
- ❖ Working Group Meeting Recap, Leadership, and Schedule
- ❖ FY25 Working Group Outcomes
- ❖ Designation Process Update
- ❖ Early College Rising
- ❖ Upcoming Dates



Fiscal Updates: Upcoming Events and Deadlines

Upcoming Webinars and Events

❖ Tuesday, January 20th at 1:30 pm:
Early College Planning Grant FC461 A-B Webinar
<https://us02web.zoom.us/j/86086121066>

❖ March 2nd -27th:
Early College Grantee Mandatory Mid-Year Reviews



Fiscal Updates: Amendments and Claiming Funding

Amendments

- ❖ Applications do not need to be amended if there is no significant change in program objectives or if the change is less than or equal to \$100 or 10% of the line (whichever is greater) but must not exceed \$10,000.

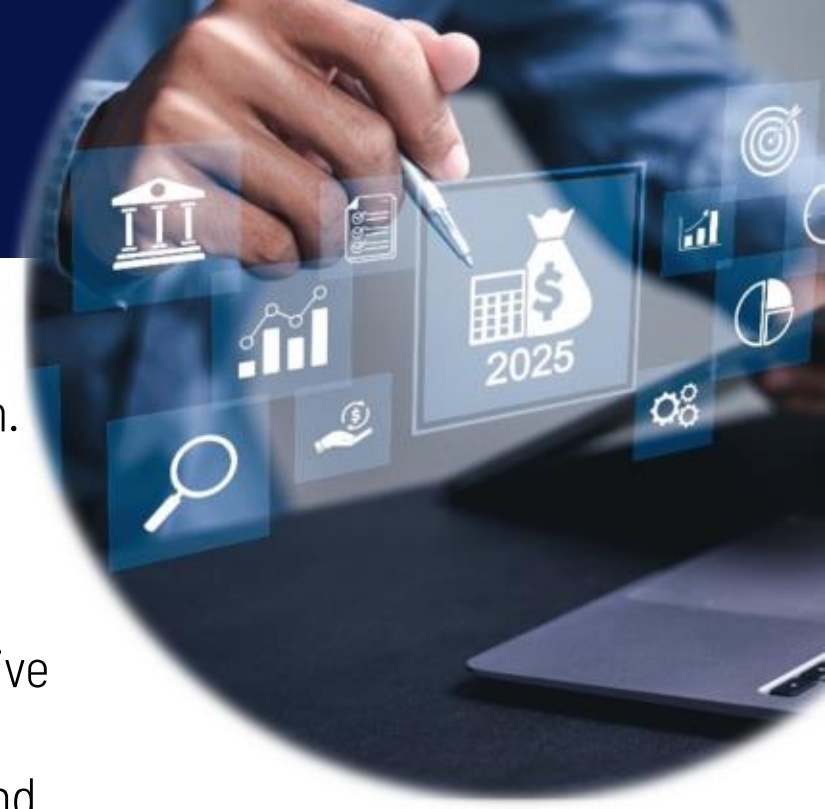
Reimbursements

- ❖ Please remember to submit all reimbursement requests monthly or at least quarterly. Only request funds used and do not submit reimbursement requests for funds that are not yet used, and/ or grantees do not plan to use.



Fiscal Updates: Reminders

- ❖ If applications are returned for edits, please review the comment section to understand what is being requested. Do not let the application sit for any reason. Grantees will not be able to use funding as desired until applications are DESE fiscally approved.
- ❖ When contacting Cashay regarding issues or concerns, be as clear and descriptive as possible, including the fiscal year and accurate fund code. If there is an error message, also include a screenshot. This allows Cashay to effectively support and address all concerns in a timely manner.
- ❖ Do not miss deadlines or wait until the last minute to complete tasks and address action items. Programs run the risk of forfeiting funding with no option for funding to be returned.
- ❖ If there are changes and/or concerns that affect the ability to spend all funding, contact Cashay ASAP.



Fiscal Updates: FC 461A-B

School Year FY26 Early College Planning Grant FC461 A-B

- ❖ FC 461 Option A Grantees: Application revisions that are pending. To use funds as desired, please complete ASAP.
- ❖ FC461 Option B Grantees: Applications are DESE Fiscally approved. Please check the GAN to confirm the spending start date.



Fiscal Updates

If you have any issues or concerns, please email Cashay Grant-Woods at Cashay.c.grant-woods@mass.gov for support.

Thank you for your patience and collaboration.

Happy Spending.

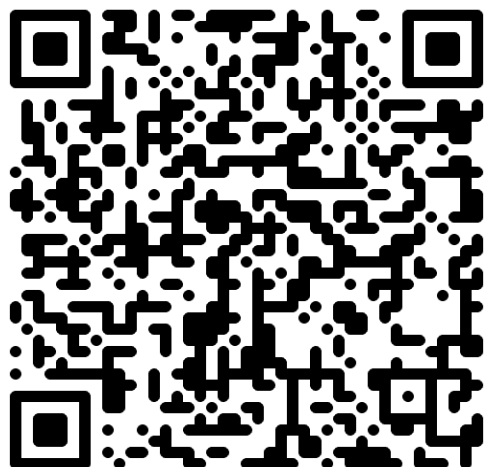


Early College Table Talk

Presented by: DHE Commissioner Dr. Noe Ortega and DESE Commissioner Pedro Martinez

Focus: Student engagement and data outcomes

Register now by clicking [HERE](#) or scanning the QR code below.





Save the Date!

DESE/ DHE
Early College Table Talk
w/ Program Leaders in
2nd year and beyond*

Hosted by:
DESE Commissioner
Pedro Martinez &
DHE Commissioner
Dr. Noe Ortega


Date: February 2, 2026
Time: 9:00am - 1:00 pm
Location:
Bristol Community College
777 Elsbree St
Fall River, MA 02720

Event Details:

- ✓ Hear the commissioner's goals for Early College
- ✓ Review current Early College program data
- ✓ Open discussion

MASSACHUSETTS
Department of
Higher Education
*seats are limited to 2 staff per institute

For more information contact
Executive Director of Early College Phylitia Jamerson
Phylitia.Jamerson@mass.gov



Working Group Meeting Recap

- ❖ Our third meeting was held on January 8, 2026.
- ❖ In this meeting:
 - Guest Speakers:
 - Tawanya Garrett, Director of College Success Initiatives, City of Cambridge
 - Al DiCiccio, Writing Center Director, Salem State University
 - We then went into breakout rooms by focus group for further discussion:
 - Early College Advising
 - Multilingual Learners in Early College
 - Students with Disabilities in Early College



Working Group Meetings

The joint Early College Working Group Meetings will be held on the second Thursday from **10:00 a.m. to noon.**

Remaining Dates for the 2025-2026 academic year are:

- ❖ February 12, 2026
- ❖ March 12, 2026
- ❖ April 9, 2026

To join Working Group meetings, click [HERE](#).

Registration is not required.



FY25 Working Group Outcomes

❖ MLL Research

❖ Students with Disabilities Guide



New Designation Process Update

- ❖ Spring Implementation of New Designation Phases



Early College Rising



*Planted with Purpose. Growing with Equity.
Rising with Opportunity for Early College in Massachusetts.*

Let's hear it for those
who rise for every
child and one
another!

Coming Up

- ❖ **February 2** – 9:00 a.m. to 1:00 p.m. – Early College Table Talk at Bristol Community College
- ❖ **February 3** – 1:00 p.m. – Next Touchpoint Tuesday Meeting
- ❖ **February 12** – 10:00 a.m. to noon – Working Group Meeting



p2c

PATHWAY2CAREERS

in
partnership
with

dese

MASSACHUSETTS
Department of
Higher Education

MA Early College

DESIGNATED EARLY COLLEGE PROGRAMS HOME

EARLY COLLEGE DESIGNATION APPLICANTS HOME

About ▾

Designation Information ▾

MAECP Tools ▾

Data Dashboard

Contact Us

MASSACHUSETTS EARLY COLLEGE COMMUNITY OF PRACTICE RESOURCE SITE

★

Massachusetts Early College provides a structured program of study and supports that increases college success and career readiness while prioritizing students historically underserved in higher education.



Account

Dashboard

Courses

Calendar

Inbox

History

Studio

Help

<https://www.maearlycollege.com/>

 **LEARNING HUB**
Your gateway to professional growth.



[Pathway2Careers](#), in partnership with the [Massachusetts Department of Elementary and Secondary Education](#) and [Department of Higher Education](#), provides technical assistance, coaching, and resources for Massachusetts Early College designees, applicants, and prospective applicants. You will find information specific to designated Early College programs in this Learning Hub.

A shared commitment to building strong foundations and working collaboratively to ensure every student has the opportunity to thrive.

Quick Links



Contact Us

NAME	EMAIL	PHONE
Phylitia Jamerson , Executive Director of Early College, DESE	phylitia.jamerson@mass.gov	781.873.9803
Richard Riccardi , Deputy Commissioner, DHE	rriccardi@dhe.mass.edu	
Kristin Hunt , Sr Director of EC Planning and Policy, DESE	kristin.e.hunt@mass.gov	
Danielle Wheeler , Director of Early College Programs, DESE	danielle.wheeler@mass.gov	
Cashay Grant-Woods , Early College Fiscal Manager, DESE	cashay.c.grant-woods@mass.gov	
Renee Poisson , Early College Program Specialist, DESE	renee.poisson@mass.gov	
Chinna Mapp , Early College Project Manager	china.mapp2@mass.gov	
Kelly Kennedy , Program Manager, Education Services, P2C	kelly.kennedy@p2c.org	865.318.6465
Jamisa Williams , Vice President of School Services, P2C	jamisa.williams@p2c.org	